



肌神[®] 肌肉生长因子

多长肌肉

就用肌神[®]

Science-driven solutions[®]

Gendone

君德同创携手李德发院士团队带来

Junde Tongchuang collaborates with Academician Li Defa's team to bring

猪多长肌肉创新产品

How long is the muscle of the pig? Innovative product

Science-driven solutions®

Gendone
discover more protein



肌神[®] 肌肉生长因子

多长肌肉

就用肌神[®]

Science-driven solutions[®]

Gendone

肌神[®] 确定的作用机理 Confirmed mechanism of action

肌神的主要成分胍基乙酸

The main component of muscle spirit is guanidinoacetic acid

是脊椎动物体内合成肌酸的唯一前体物。

It is the only precursor for the synthesis of creatine in vertebrates.

肌肉合成更多 More muscle synthesis

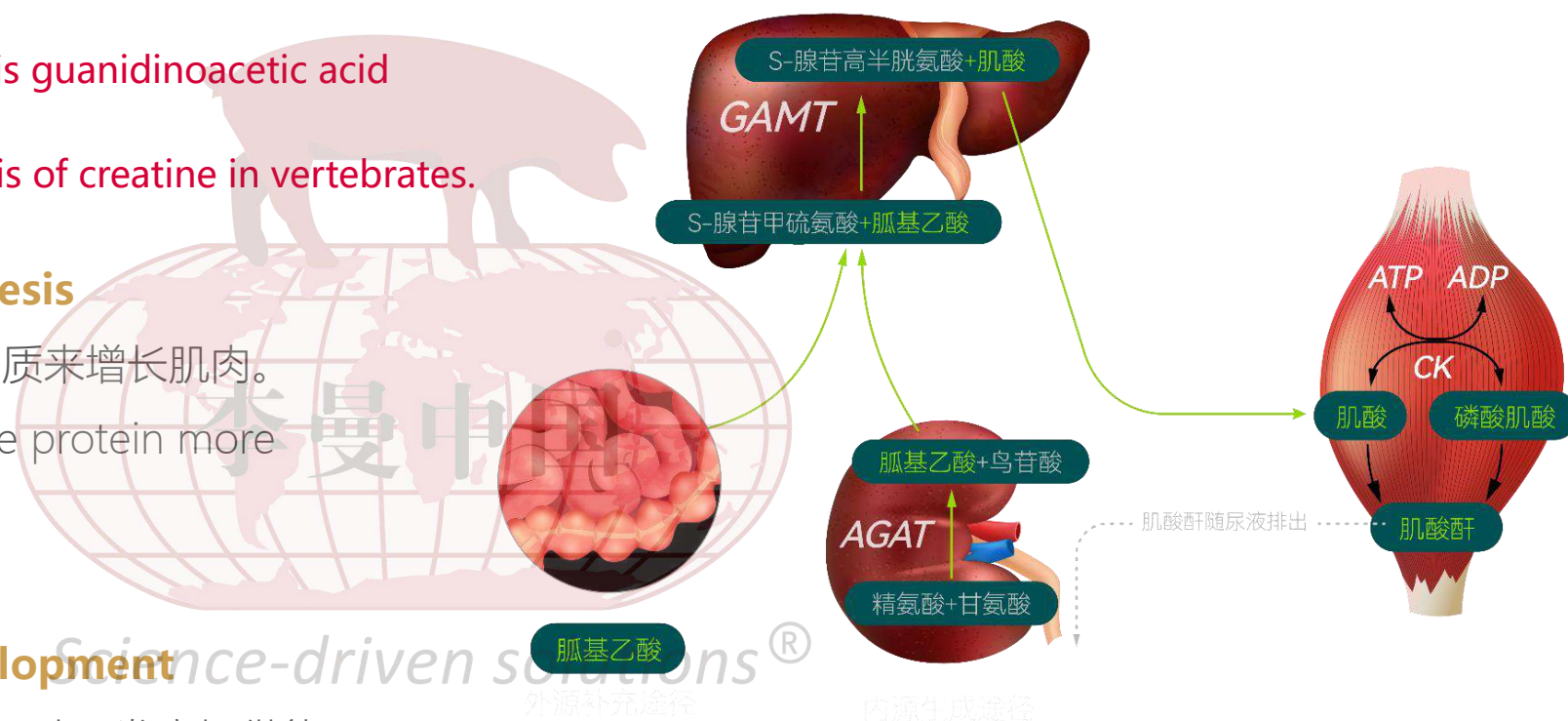
肌酸能使机体以更高的效率利用蛋白质来增长肌肉。

Creatine can enable the body to use protein more efficiently to grow muscles.

肌肉发育更好 Better muscle development

肌酸可以促进ATP的转化，为肌肉的运动、发育提供能量。

Creatine can promote the conversion of ATP, providing energy for muscle movement and development.



君德同创Junde Tongchuang
全球最大的胍基乙酸生产商

The world's largest producer of guanidinoacetic acid 全球
胍基乙酸标准制定者
Global standard setter for guanidinoacetic acid



高品质、更安全的胍基乙酸

High quality and safer guanidinoacetic acid

君德同创作为胍基乙酸专利原研商，在资质、生产、品质及应用研发各个环节都拥有显著优势。

As the original developer of guanidinoacetic acid patents, Junde Tongchuang has significant advantages in qualification, production, quality, and application research and development.

肌神[®] 效果保障 Effect guarantee

与李德发院士团队合力攻关

Collaborate with Academician Li Defa's team to tackle key issues

以创新技术实现全场景应用解决方案

Implementing full scenario application solutions with innovative technology



先肌[™] 营养分配技术

先肌[™] Nutritional allocation
technology

独家专利水溶技术

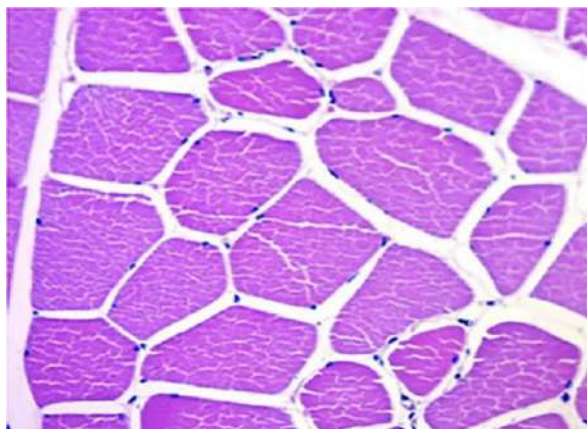
Exclusive patented water-
soluble technology

Science-driven solutions

先肌™ 营养分配技术 先肌™ Nutritional allocation technology

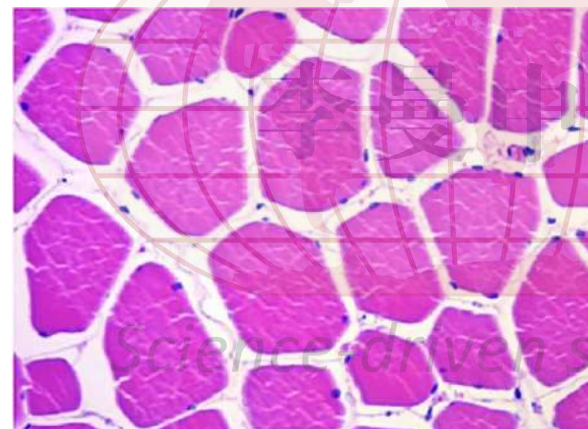
选用以胍基乙酸为主的多种肌肉生长因子及营养增效剂，能调节营养物质的转运和分配，促进肌肉合成，促进肌纤维数目增多、变粗、变长。

Using various muscle growth factors and nutritional enhancers mainly composed of guanidine acetic acid can regulate the transport and distribution of nutrients, promote muscle synthesis, and increase the number, thickness, and length of muscle fibers.



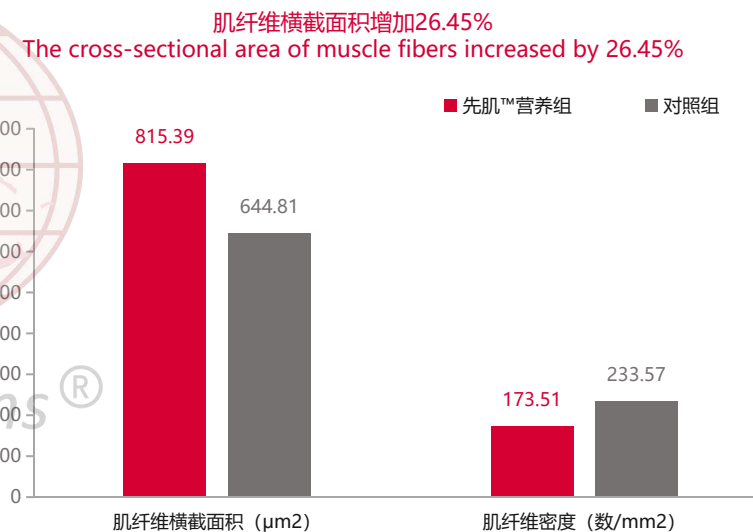
先肌™ 营养组：肌纤维粗、肌纤维间隙小，紧凑

先肌™ Nutrition group: Coarse muscle fibers, small muscle fiber gaps, compact



对照组：肌纤维较细、间隙大、结构松散

Control group: Fine muscle fibers, large gaps, and loose structure



肌纤维横截面积 (μm²) 肌纤维密度 (数/mm²)
Cross sectional area of muscle fibers (μ m²) and muscle fiber density (number/mm²)

独家专利水溶技术 Exclusive patented water-soluble technology

全球唯一专利水溶技术，实现全部有效成分快速水溶，不受温度、环境、水质影响，在水线中长期稳定不降解，从而保证有效成分高利用率。

The world's only patented water-soluble technology achieves rapid water solubility of all active ingredients, unaffected by temperature, environment, and water quality, and remains stable in the water line for a long time without degradation, thereby ensuring high utilization rate of active ingredients.



100 g肌神加到500 ml水中，1 min内快速溶解，并且溶液清亮，肌神水溶在水中最大溶解度超过400kg/t以上，在是常规饮水添加量的800倍以上。

Add 100g of muscle essence to 500ml of water, dissolve quickly within 1 minute, and the solution is clear. The maximum solubility of muscle essence in water exceeds 400kg/t, which is more than 800 times the amount added to regular drinking water.



肌神[®] 肌肉生长因子

多长肌肉
就用肌神[®]

Science-driven solutions[®]

Gendone



肌神®多长肌肉体验点

肌神®How many muscle experience points are there

增肌快长看得见

Visible increase in muscle mass and rapid growth

背宽收腹臀丰满

Wide back, tight belly, plump buttocks

紧实压秤出肉多

The compact weighing scale produces more meat®

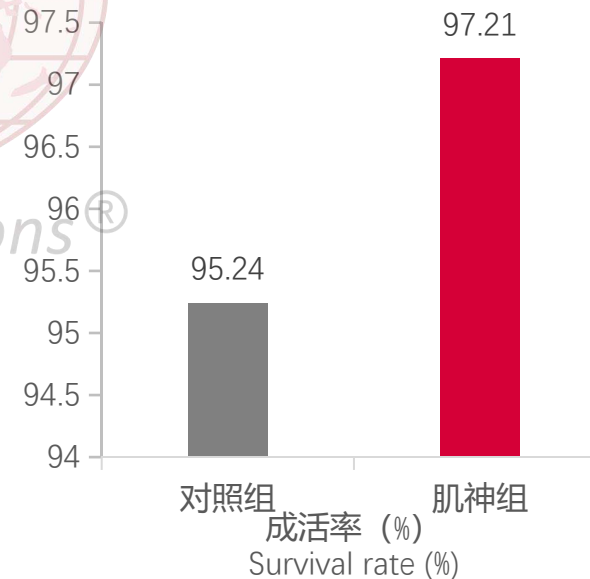
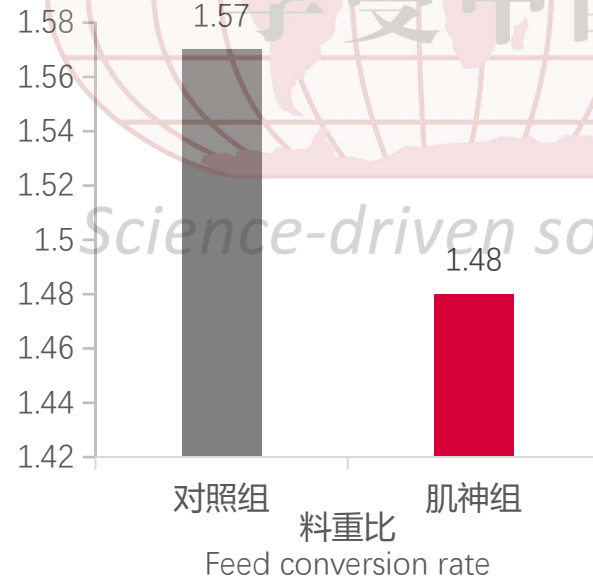
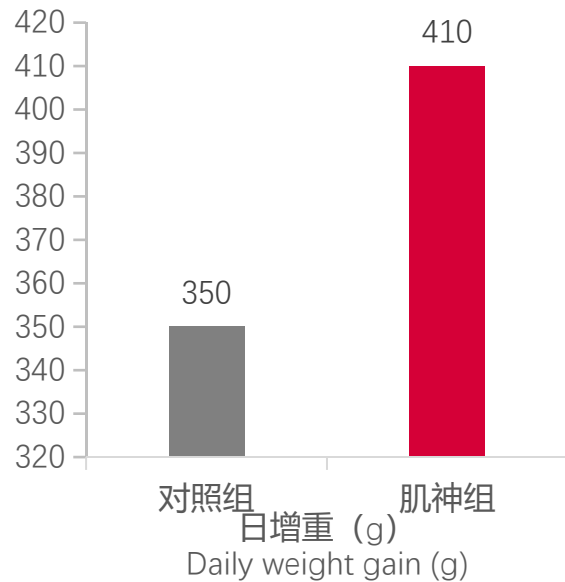
Science-driven solutions

提高断奶仔猪日增重60 克，降低料重比0.09，提高成活率2%

Increase the daily weight gain of weaned piglets by 60 grams and reduce the feed to weight ratio by 0.09, Increase survival rate by 2%

上海某规模化猪场（存栏母猪550 头），选取425 头三元杂交断奶仔猪，对照组210 头，试验组215 头，对照组饲喂基础日粮，试验组在基础日粮中额外添加肌神®1 kg/t，试验时间45 天。

A large-scale pig farm in Shanghai (with 550 sows in stock) selected 425 three element hybrid weaned piglets, with 210 in the control group and 215 in the experimental group. The control group was fed a basic diet, while the experimental group received an additional addition of muscle and spirit in the basic diet® 1 kg/t, test time 45 days.

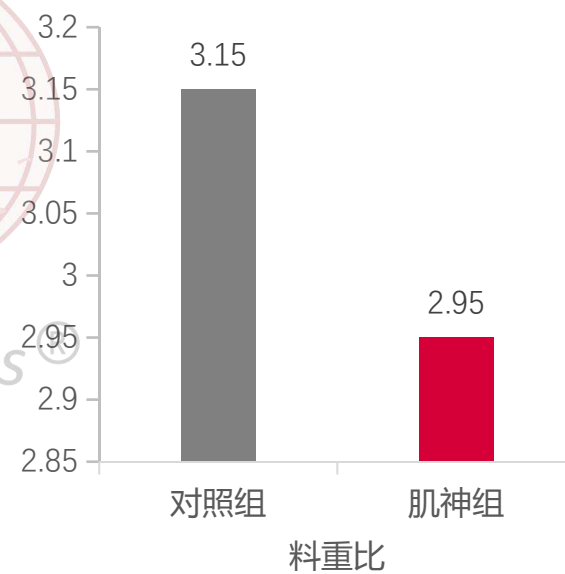
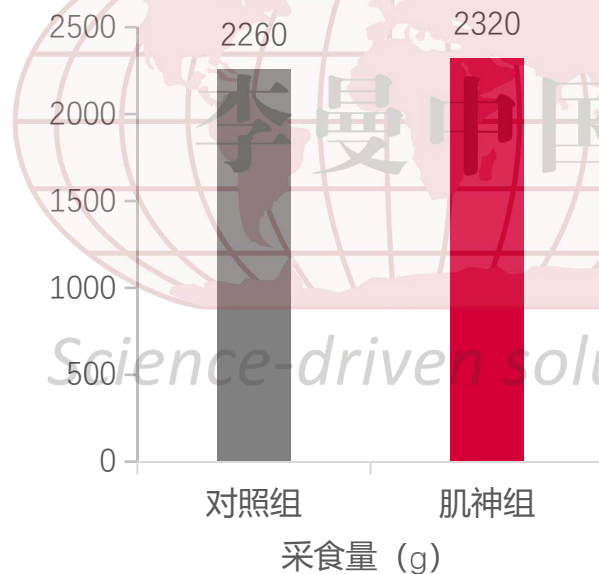
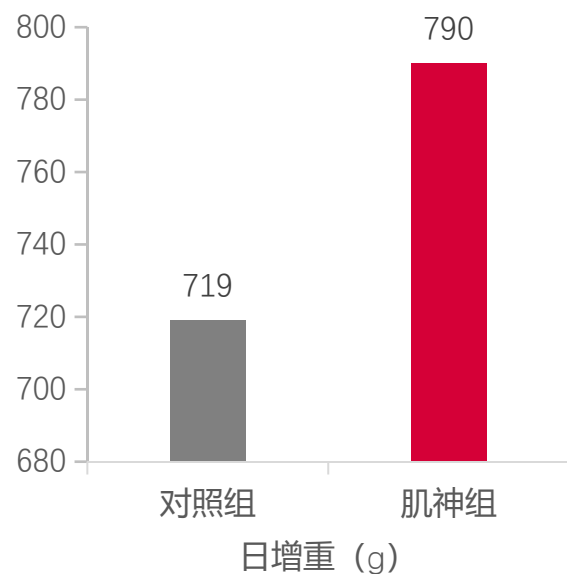


提高生长育肥猪日增重71 克，降低料重比0.2

Increase the daily weight gain of growing and fattening pigs by 71 grams, and reduce the feed to weight ratio by 0.2

海南某大型集团猪场分场（存栏2000 头母猪），选取1993 头体重约30 kg三元杂交生长猪，对照组1000 头，试验组993 头。对照组饲喂基础日粮，试验组在基础日粮中额外添加肌神®1 kg/t，对照组试验时间130.9 天(加权平均数)，试验组129.9 天(加权平均数)。

A large group pig farm branch in Hainan (with 2000 sows in stock) selected 1993 three-way hybrid growing pigs weighing about 30 kg, with 1000 pigs in the control group and 993 pigs in the experimental group. The control group was fed with a basic diet, while the experimental group received an additional muscle supplement in the basic diet @ 1 kg/t, control group experiment time 130.9 days (weighted average), experimental group 129.9 days (weighted average).

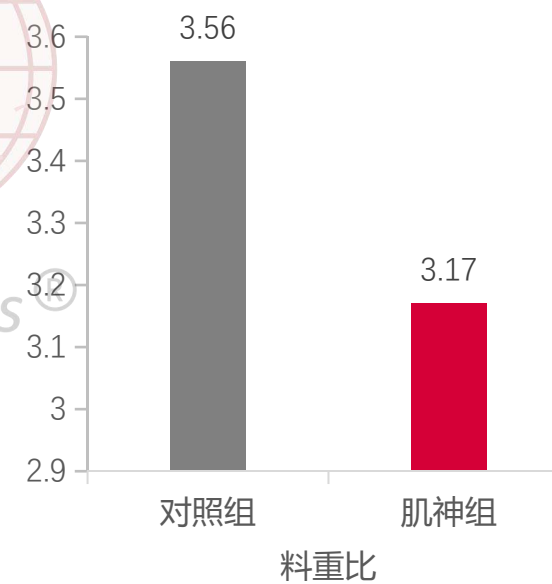
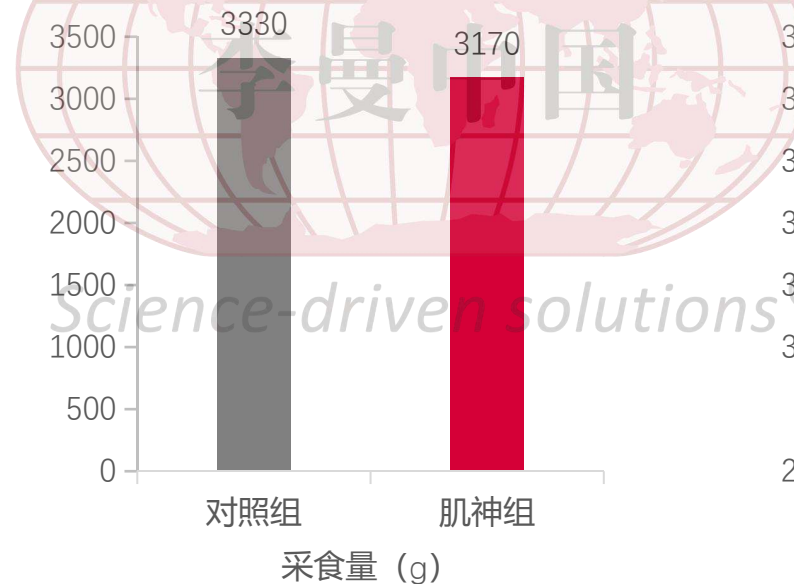
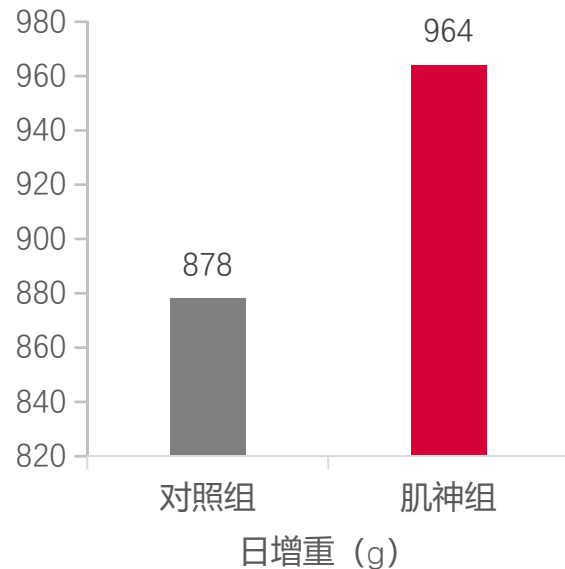


提高育肥猪日增重86 克，降低料重比0.39

Increase daily weight gain of fattening pigs by 86 grams and reduce feed to weight ratio by 0.39

黑龙江某猪场，选取60 头三元杂交育肥猪，对照组和试验组各30 头。对照组饲喂基础日粮，试验组在基础日粮中额外添加肌神®1 kg/t，试验时间63 天。

A pig farm in Heilongjiang Province selected 60 ternary hybrid fattening pigs, with 30 in the control group and 30 in the experimental group. The control group was fed with a basic diet, while the experimental group received an additional muscle supplement in the basic diet ® 1 kg/t, test time 63 days.



福清肌神猪品鉴会

肌神猪体型好、更压秤、屠宰率高1.41%、出肉率高2.08%
Muscle God Pig has a good body size, a heavier scale, a 1.41% higher slaughter rate, and a 2.08% higher meat yield



	毛重(斤)	肉重(斤)	头脚重(斤)	胴体重(斤)	屠宰率	出肉率	板油重
肌神组	276.8	237.7	18.9	218.8	79.04%	85.87%	4.1
对照组	280	236.5	21	215.5	76.96%	84.46%	4.3







背宽收腹臀丰满



肌神[®] 拌料、水溶两款，匹配全场景精准应用

Mixing and water-soluble options, matched for precise application in all scenarios



拌料添加使用
Mixing and adding materials for use

水线添加使用
Add and use waterline

匹配拌料场景
不同长肌肉需求的应用方案
Match the mixing scene
Application solutions for different long muscle needs



肌神[®]

快速长肌肉方案
Rapid muscle building
program



肌神[®]

理想长肌肉方案
Ideal muscle building
plan

Science-driven solutions[®]

肌神[®] 快速长肌肉方案



6 kg-20kg

小猪养殖效益提升

Improving the efficiency of
pig farming

500 克配料1000 斤 (即0.1%)

500g ingredient 1000 jin (0.1%)

每头小猪多卖40元，净赚36.22元 (40-3.78)

Selling an extra 40 yuan per piglet will result in a net profit of 36.22 yuan (40-3.78)

- 多增重增收40元 = $1\text{kg} \times 40\text{元/kg}$
- Increasing weight and income by 40 yuan = $1\text{kg} \times 40\text{ yuan/kg}$
- 肌神使用成本3.78元 = 采食饲料21 kg * 添加量0.1% * 肌神单价180/kg
- The cost of using the muscle god is 3.78 yuan = $21\text{ kg of feed intake} \times 0.1\% \text{ of added amount} \times 180/\text{kg of muscle god unit price}$

肌神[®] 快速长肌肉方案



70 kg至出栏使用

70 kg to be used for
slaughter

养殖效益提升案例

Case study on improving
breeding efficiency

500 克配料1000 斤 (即0.1%) 500g ingredient 1000 jin (0.1%)

某规模猪场: 70 kg-出栏使用, 肌神添加量0.1%, 饲料用量均值165 kg/头

A certain scale pig farm: 70 kg for slaughter, 0.1% muscle and spirit addition, average feed consumption of 165 kg per head 对照组:

起始体重70.0 kg, 出栏体重125.0 kg, 料重比3.0

Control group: starting weight 70.0 kg, slaughter weight 125.0 kg, feed to weight ratio 3.0

肌神组: 起始体重70.0 kg, 出栏体重130.0 kg, 料重比2.75

Muscle God Group: Starting weight 70.0 kg, slaughter weight 130.0 kg, feed to weight ratio 2.75

每头猪多卖131元, 净赚101.3元 (26+105-29.7)

Selling each pig for an additional 131 yuan resulted in a net profit of 101.3 yuan (26+105-29.7)

- 改善体型增收26元 = 0.2元/kg*130 kg
- Improving body shape and increasing income by 26 yuan=0.2 yuan/kg * 130 kg
- 多增重增收105元 = 5 kg*毛猪21 元/kg
- Increasing weight and income by 105 yuan=5 kg * 21 yuan/kg for pigs
- 肌神使用成本29.7元 =采食饲料165 kg*添加量0.1%*肌神单价180/kg
- The cost of using the muscle god is 29.7 yuan=165 kg of feed intake * 0.1% of added amount * 180 kg of muscle god unit price

肌神[®] 理想长肌肉方案



8 kg至出栏使用

8 kg to be used for
slaughter

养殖效益提升案例

Case study on improving
breeding efficiency

500 克配料1000-2000 斤 (即0.05%~0.1%)

500g ingredient 1000-2000 jin (i.e. 0.05%~0.1%)

某家庭农场：断奶到出栏全程使用，肌神平均添加量0.075%，饲料用量均值320 kg/头

A family farm: used from weaning to slaughter, with an average muscle and spirit addition of 0.075% and an average feed consumption of 320 kg/head

对照组：起始体重8.0 kg，出栏体重125 kg，料重比2.74

Control group: starting weight 8.0 kg, slaughter weight 125 kg, feed to weight ratio 2.74

肌神组：起始体重8.0 kg，出栏体重135kg，料重比2.52

Muscle God Group: Starting weight 8.0 kg, slaughter weight 135 kg, feed to weight ratio 2.52

每头猪多卖237元，净赚193.8元 (27+210-43.2)

Selling an extra 237 yuan per pig resulted in a net profit of 193.8 yuan (27+210-43.2)

- 改善体型增收27元 = 0.2元/kg*135 kg
- Improving body shape and increasing income by 27 yuan=0.2 yuan/kg * 135 kg
- 多增重增收210元 = 10 kg*毛猪21元/kg
- Increasing weight and income by 210 yuan=10 kg * 21 yuan/kg for pigs
- 肌神使用成本43.2元 =采食饲料320 kg*添加量0.075%*肌神单价180/kg
- The cost of using muscle spirit is 43.2 yuan=320 kg of feed intake * 0.075% of added amount * 180/kg of muscle spirit unit price



肌神[®]

快速长肌肉方案

保育阶段 500克配料1000斤

Nursery Stage 500g ingredient 1000-2000 Jin

断奶至20kg左右 Weaning to around 20kg

育肥阶段 500克配料1000斤

Finishing Stage 500g ingredient 1000-2000 Jin

70kg至出栏 70kg to market



肌神[®]

理想长肌肉方案

断奶至出栏全程

From weaning to slaughter

500克配料1000~2000斤

500g ingredient 1000-2000 Jin

Science-driven solutions[®]

注意事项：1、养殖过程必须保证充足饮水；2、全植物日粮效果更佳。

Attention: 1. Adequate drinking water must be ensured during the breeding process; 2. Whole plant diets have better effects.

君德同创携手李德发院士团队

多长肌肉 就用肌神[®]



Science-driven **每头猪多赚200元**
Each pig earns an additional 200
yuan



肌神[®] 肌肉生长因子

多长肌肉
就用肌神[®]

Science-driven solutions[®]

Gendone